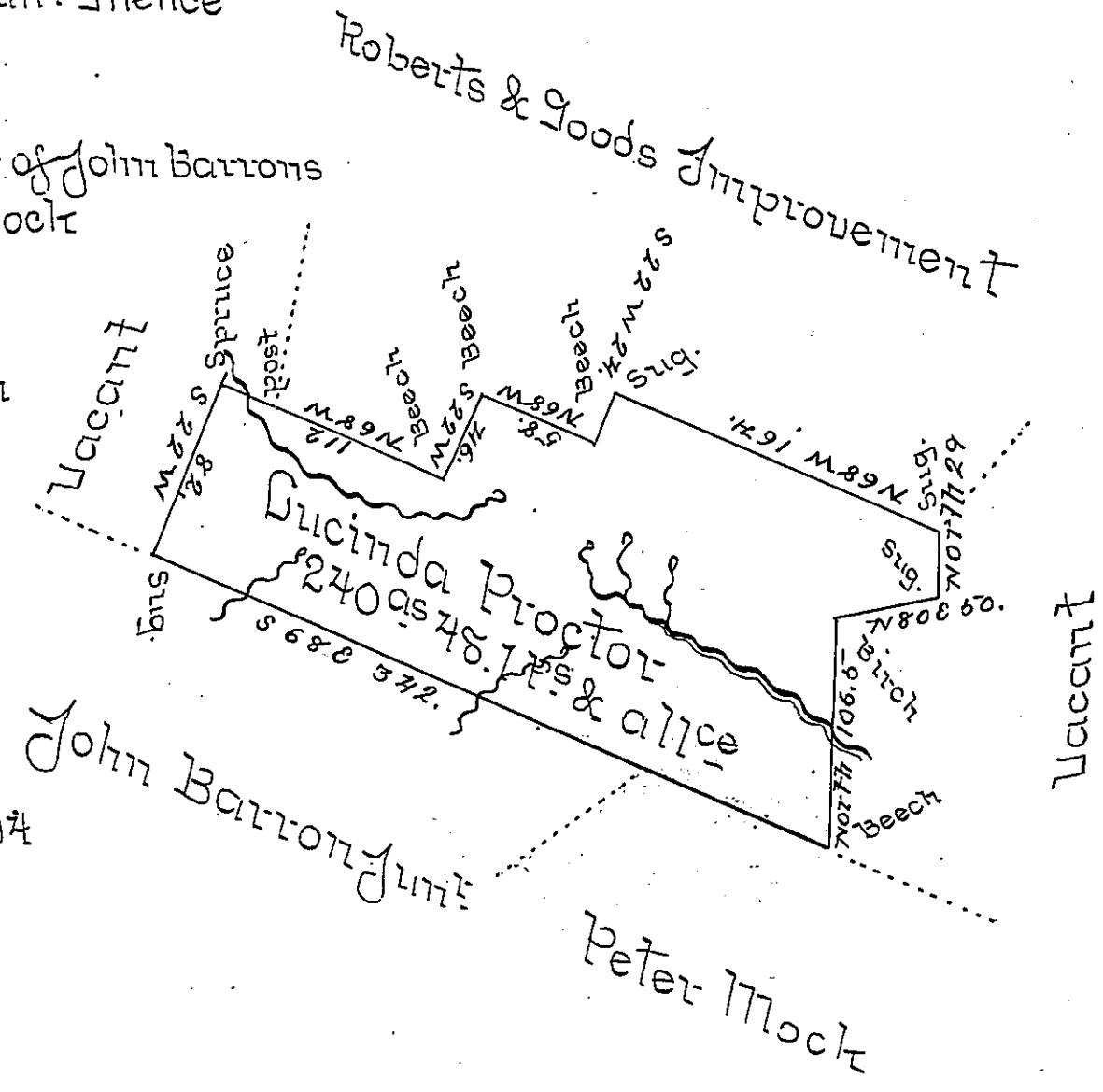


Beginning at a Sugar on the
 line of John Barron Junr: Thence
 S 69 E 42 water out
 161 water out
 229 post a corner of John Barrons
 Junr & Peter Mock
 342 Beech
 North 48 water out
 106.5 Small Birch
 N 50 E 50 sugar
 North 29 sugar
 N 68 W 164 sugar
 S 22 W 24 Beech
 N 65 W 58 Beech
 S 22 W 46 Beech
 N 65 W 112 Spruce
 water out at 94
 S 22 W 52 sugar



Situated on the waters of Hinkstons and Salt Dick runs in
 the Township of Conemaugh and County of Cambria and Sur-
 veyed the 3^d day of March 1825. In pursuance of a Warrant
 dated the 29th day of January 1825.

Isaac Proctor D.S.

Samuel Cochran Esq: S.Y.

IN TESTIMONY that the above is a copy of the original remaining on file in
 the Department of Internal Affairs of Pennsylvania, made
 conformably to an Act of Assembly approved the 16th day of
 February, 1833, I have hereunto set my Hand and caused
 the Seal of said Department to be affixed at Harrisburg,
 this sixth day of November 1899.

James W. Latta
 Secretary of Internal Affairs.